



CENSE.org

Coalition of Eastside Neighborhoods
for Sensible Energy

Eastside Neighborhoods Say “No” to Puget Sound Energy’s Dangerous Mega-Project

And “Yes” to Safe, Green, Smart Energy Solutions

The **Coalition of Eastside Neighborhoods for Sensible Energy** (CENSE) represents over 3,000 residents and employers who **oppose** the construction of an oversized, unsafe, 18-mile scar of massive poles and high voltage electricity transmission lines impacting 29 neighborhoods in Redmond, Kirkland, Bellevue, Newcastle, and Renton.

Our coalition advocates for a transparent decision-making process and better plan that adopts 21st century best practices in distributed generation, advanced energy management and conservation—already at work in other cities—to safely and reliably power our growth and keep our communities beautiful and livable.

Why This Mega-Project is Bad for Our Families, Businesses, and Communities

Puget Sound Energy's mega-project is dangerous.

Experts caution that industrial-scale utility poles with high voltage cables built on top of two aging jet fuel pipelines would significantly increase the risk of pipeline failure and catastrophic fire. A 1999 explosion of one of these pipelines killed three Bellingham children. Thousands live and work in homes, businesses, schools, and parks along the proposed route through 29 neighborhoods.

8,000 mature trees would be cut down to clear the route for this massive construction project—a setback to our efforts to mitigate the impacts of climate change, keep our cities livable, and attract businesses to our region.

PSE's construction plan is massively oversized.

Industry leaders have challenged PSE's inflated estimates for the Eastside's annual increase in electricity demand and false threats of "rolling blackouts." PSE's plan is sized to accommodate export of energy to Canada, far beyond our local need.

PSE's plan does nothing to help us manage our energy consumption or costs. Its excessive increase in capacity would reduce incentives for PSE and our cities, residents, and businesses to implement robust conservation and efficiency technologies already embraced by other cities across the country.

PSE's claims of greater reliability are exaggerated—and do not compare to what we could achieve by adding distributed generation capacity that is less vulnerable to windstorms.

PSE is a for-profit corporation that was bought by an Australian private equity fund in 2009.

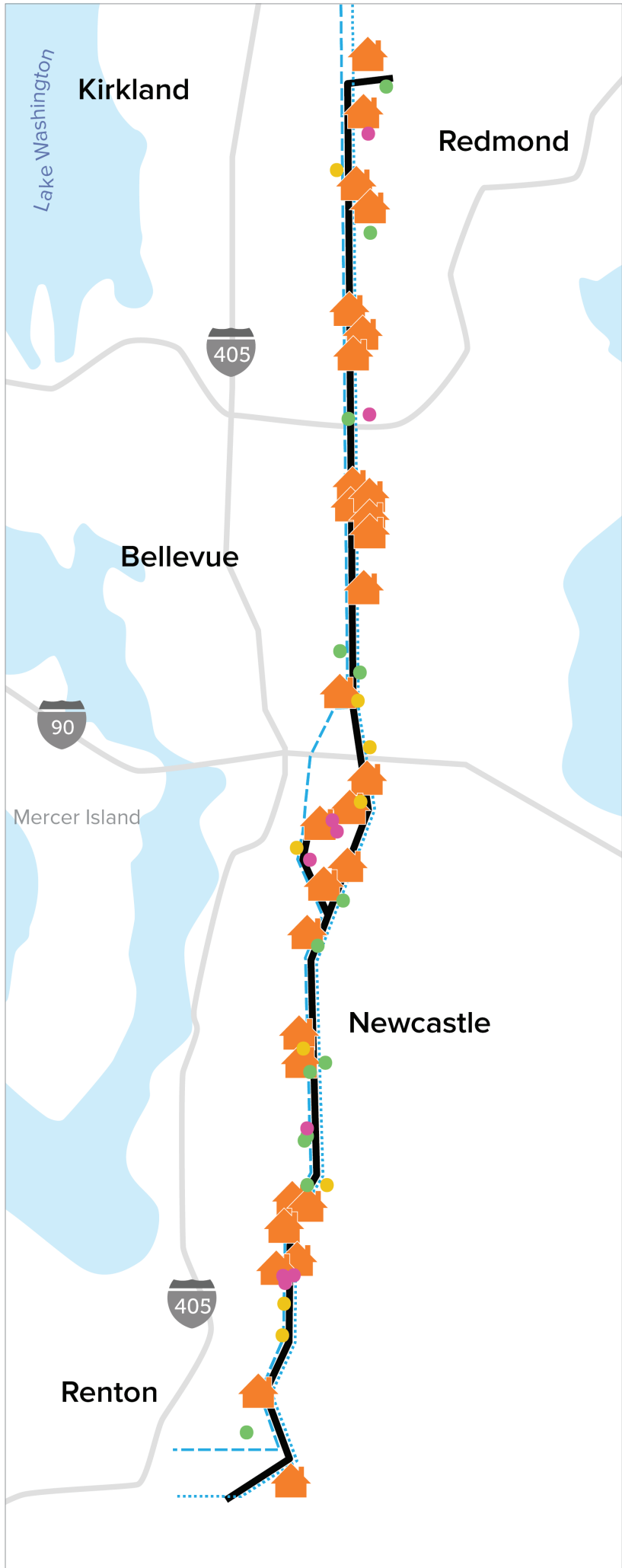
Its goal is profits via 10% guaranteed return on infrastructure expenditures, not smart growth for our communities.



We can and should develop a better energy plan based on safe, green, reliable, cost-effective, 21st century solutions already at work in other growing cities.

CENSE advocates for a plan that:

- Is **flexible** and **scalable** to our needs.
- Embraces proven **smart energy technologies**.
- Is **geographically distributed** and makes us less vulnerable to disruptions.
- Incentivizes **conservation** and **efficiency**.
- **Upgrades** previous investments.



Jet Fuel Pipelines and Proposed Transmission Line Route through the Eastside

— Proposed transmission line

--- Olympic Pipeline

● Parks and trails (13)

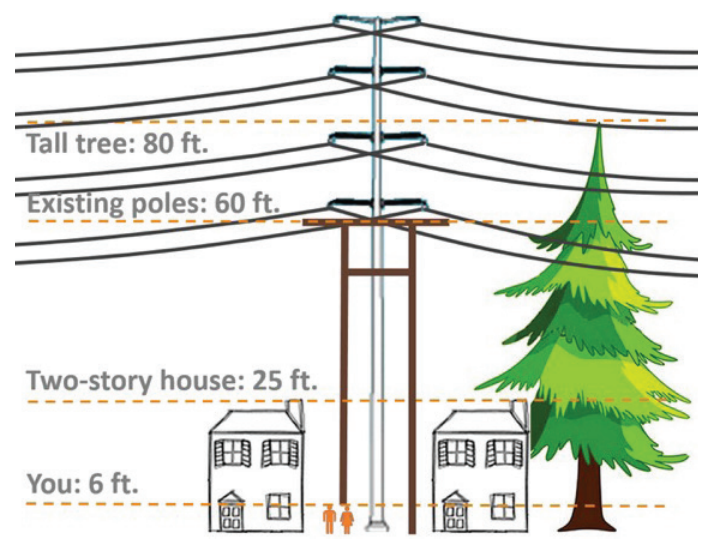
● Churches (9)

● Schools, day care centers (9)

🏠 Neighborhoods (29)

- Education Hill
- Rose Hill
- Grass Lawn
- Sixty-01 Condominiums
- Trails End
- Bridle Trails
- Shadow Wood
- Overlake
- Woodland Commons
- Wilburton
- Crossroads
- Glendale
- Lake Hills
- West Lake Hills
- Eastgate
- Monthaven
- Factoria
- Somerset
- Westwood Highlands
- Newport Hills
- Donegal
- Olympus
- Honey Creek Ridge
- Glencoe
- Honey Creek Park
- President Park
- Sunset
- Liberty Ridge
- Shadow Hawk

230 kV pole: 100 ft.





Join Other Eastside Residents Advocating for Safer, Greener, Smarter Energy Solutions

- CENSE hired independent energy experts to develop a better plan to safely and reliably power our growth and keep our communities beautiful and livable. This “Alternative 2B” needs to be given full consideration by the City of Bellevue, the lead agency reviewing the environmental and community impacts of PSE’s plan.
- Hundreds of residents have objected to PSE’s plan at public city council meetings, and hundreds more have written council members calling for a more transparent process which addresses deep concerns about PSE’s mega-project.

City Councils are Paying Attention

- The City of Newcastle issued a six-month moratorium on any permits related to this project.
- The East Bellevue Community Council unanimously rejected PSE’s plan to install a three-mile transmission line that would require removing 300 mature trees from 148th Ave and NE 8th Street. PSE sued. The judge sided with East Bellevue Community Council, noting that state law explicitly allows community councils to make land use decisions. PSE is appealing.

You Can Help

Contact the city council members of Bellevue, Kirkland, Redmond, Newcastle and Renton and tell them you want a safe, green, smart plan to power our growth.

The City of Bellevue Council and staff are leading the review process. Write, email, or call them with your concerns and ask them to invest time and resources to develop a better plan.

Join the growing number of Eastsiders advocating for a better energy future for our communities at www.CENSE.org.